

# The Turnberry

1,854 Sq. Ft., 2 Bedroom, 2 Bath, 1 Car Garage



Elevation B



Elevation C

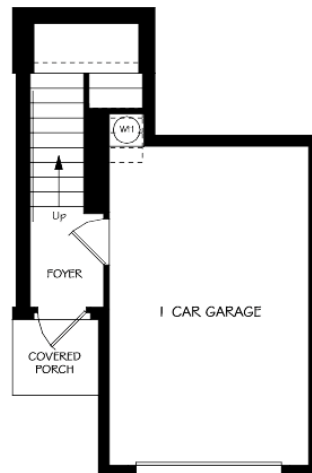
**LENNAR.COM**

See Important Legal Notices for terms and conditions.



# The Turnberry

1,854 Sq. Ft., 2 Bedroom, 2 Bath, 1 Car Garage



**ORAL REPRESENTATIONS CANNOT BE RELIED UPON AS CORRECTLY STATING REPRESENTATIONS OF THE DEVELOPER. FOR CORRECT REPRESENTATIONS, MAKE REFERENCE TO THIS BROCHURE AND TO THE DOCUMENTS REQUIRED BY SECTION 718.503, FLORIDA STATUTES, TO BE FURNISHED BY A DEVELOPER TO A BUYER OR LESSEE.**

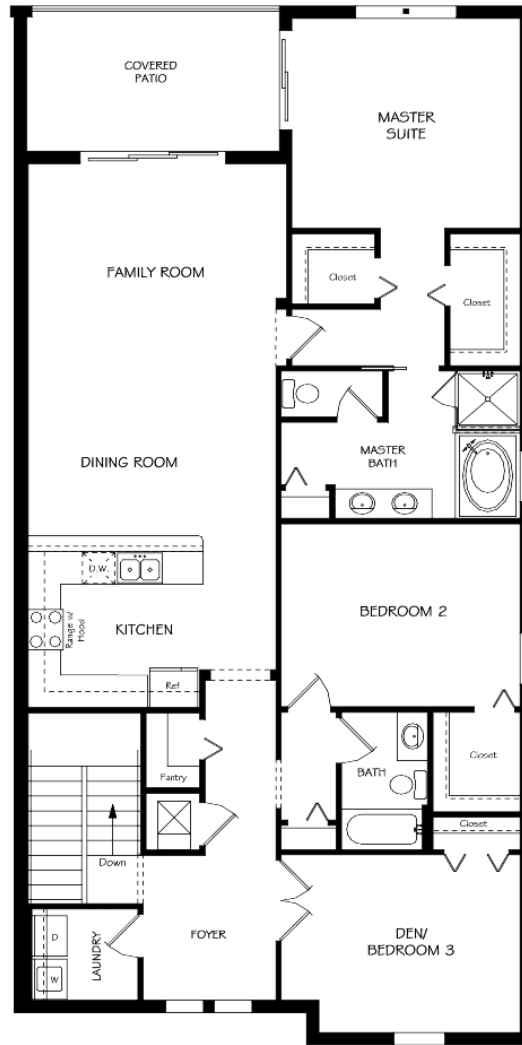
**LENNAR.COM**

See Important Legal Notices for terms and conditions.



# The Turnberry

1,854 Sq. Ft., 2 Bedroom, 2 Bath, 1 Car Garage



**ORAL REPRESENTATIONS CANNOT BE RELIED UPON AS CORRECTLY STATING REPRESENTATIONS OF THE DEVELOPER. FOR CORRECT REPRESENTATIONS, MAKE REFERENCE TO THIS BROCHURE AND TO THE DOCUMENTS REQUIRED BY SECTION 718.503, FLORIDA STATUTES, TO BE FURNISHED BY A DEVELOPER TO A BUYER OR LESSEE.**

**LENNAR.COM**

See Important Legal Notices for terms and conditions.

