

2046

THE ANTIGUA



2,046 Sq. Ft.

5 Bedroom

5 Bath

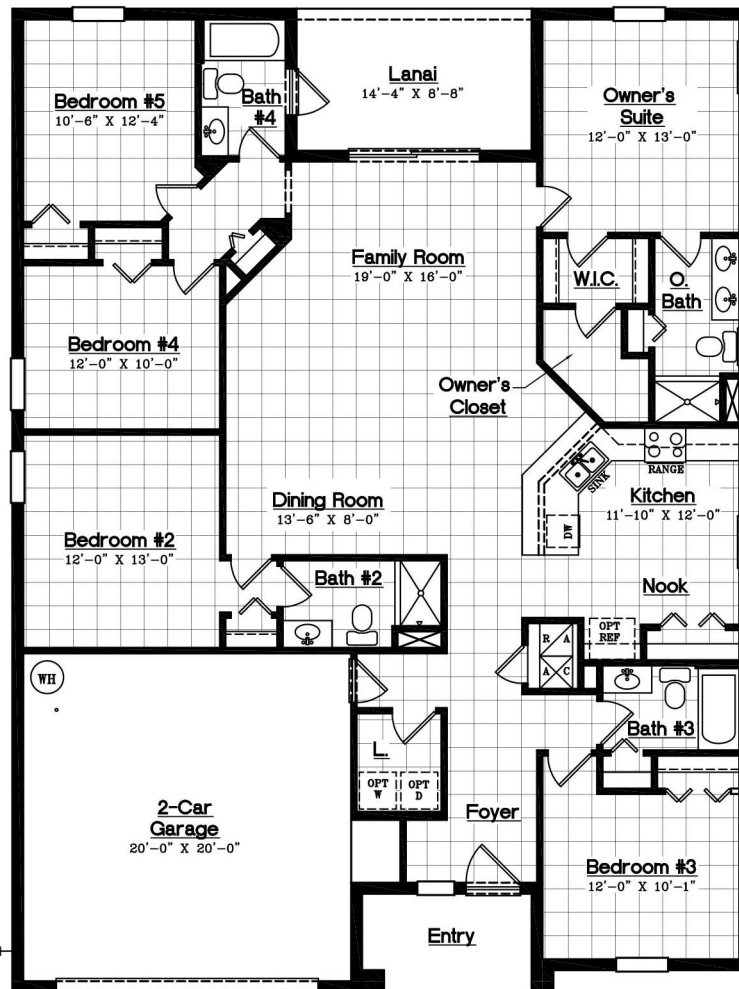
2-Car Garage



D·R·HORTON[®]
America's Builder

drhorton.com/orlando

THE ANTIGUA



AREA CALCULATIONS

Living	2,046 sq. ft.
Garage	449 sq. ft.
Entry	64 sq. ft.
Lanai	124 sq. ft.
Total	2,683 sq. ft.



Floorplans and elevations are artist's renderings for illustration purposes only. Features, sizes and details are approximate and will vary from the homes as built. Square foot dimensions are approximate. Builder reserves the right to change and/or alter materials, specifications, features, dimensions, designs and price without prior notice or obligation. CBC1252212. Current as of 03/06/14.